

evoXs

heavy duty electronic locks

Contents

- Company
- Market
- Solution

About Emloc

Located in Munich/Germany

Provider of the mechatronic locking- and access control system evoXs. Focus on the requirements of customers from Utilities, Communications, Industry and Transportation/Logistics

Management and Board comprise of experienced experts, which have decisively developed and shaped the development of electronic locking- and access control systems

Hans Illig, MD, Thomas Weber and Dr. Malte Iversen

Bernd Quade, Chairman of the Board, MD Sahlberg GmbH

Production certified according to ISO 9001:2015 and ISO 14000

Contents

- Company
- **Market**
- Solution

The next step in locking systems

The mechatronic locking systems evoXs with focus on the requirements of enterprises from the sectors

- Communications
- Utilities
- Industry
- Transportation/Logistics

Typical deployment under severe environmental conditions

- Robust, weather-proof and environmental-friendly
- Maintenance free and economical
- Easy to use

The logo for evoXs, with "evo" in a grey sans-serif font and "Xs" in a dark blue sans-serif font.

heavy duty electronic locks

Segment Utilities/Disposal

Target customers

- Energy providers
- Gas providers
- Water providers
- Municipalities
- Waste disposal companies



Use Case

- Certified, insensitive mechatronic locking technology
- Traceable workflow with ticket-management
- Wide product range for detached distribution boxes

Applications

- Switching cabinets (retrofit)
- Distribution boxes (retrofit)
- Key safes
- Perimeter security
- Door and gate security

Products

- Europrofile Double cylinders
- Europrofile Half cylinders
- Padlocks
- Lever locks
- Cam locks
- Door managers and readers

Segment Communications

Target Customers

- Fixed-line and mobile operators
- Cable network operators
- Regional and communal network providers



Use case

- Secure access to Sicherer Zugang to high-tech equipment
- Traceable workflow with ticket-management
- Low maintenance costs

Applications

- Switching cabinets (retrofit)
- Distribution boxes (retrofit)
- Key safes
- Perimeter security
- Door and gate security

Products

- Europrofile Double cylinders
- Europrofile Half cylinders
- Padlocks
- Lever locks
- Cam locks
- Door managers and readers

Segment Industry (OEM)

Target customers

- Switching cabinet manufacturers
- Showcase and display manufacturers
- Vending machine manufacturers
- Packing and charging stations



Use Case

- Versatile product portfolio for the original equipment and retrofit of switching cabinets, machine controls, showcases, displays and vending machines
- On- and offline operation
- Straight-forward operation in case of breakdown

Applications

- Switching cabinets (OEM)
- Machine control units (OEM)
- Showcase cabinets (OEM)
- Vending machines (OEM)

Products

- Europrofile half cylinders
- Lever locks
- Showcase locks
- Vending machine locks
- Handle locks
- Handle lock cylinders

Segment Transportation/Logistics

Target customers

- Railway companies
- Logistic companies
- Forwarders



Use case

- Traceable workflow for container management
- Enhanced security against miss-use and theft
- Low investment and simple system configuration

Applications

- Properties
- Warehouses
- Containers / trailers
- Packing stations (retrofit)
- Showcases (retrofit)
- Vending machines (retrofit)

Products

- Europrofile Double cylinders
- Europrofile Half cylinders
- Lever locks
- Showcase locks
- Vending machine locks
- Handle locks
- Handle lock cylinders

Contents

- Company
- Market
- Solution

Overview evoXs

A locking system that:

is easy to administer,

It may be reprogrammed anytime.

Programming either by pc, NFC or BLE with programming device, door manager or smart phones .

has no batteries in the doors,

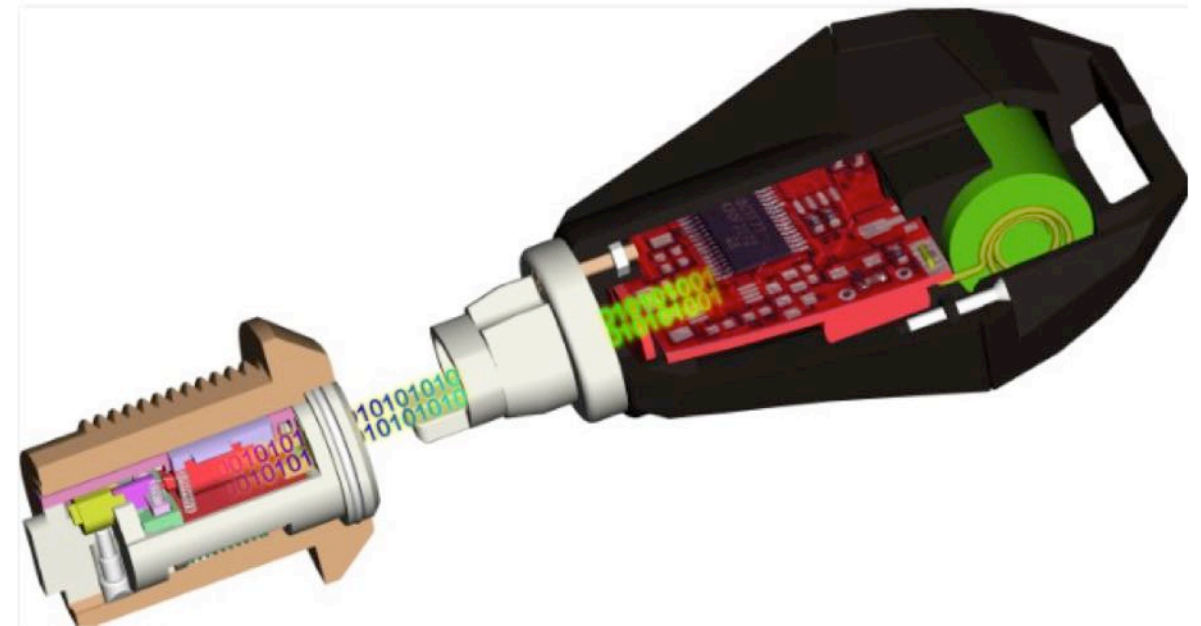
Locks are battery free.

No battery replacement (in pouring rain or icecold winters).

is designed for use under all weather conditions .

No knobs which may be damaged.

No keyways which may be blocked by particles.



Battery-free locking cylinders

Energy provided by contacts.
Actuator very compact and encapsulated.
No keyway.
Modular extendable cylinders.
-40°C up to +80°C environmental temperature.
DIN EN 18252, EN 1303, DIN EN 15684.
Protection class IP 68.
Contact surge protection 8 kV.
Housing surge protection 15 kV.
AES 128 encryption.
Double verification code.



Wide range of lock cylinders

Lever locks with misc. levers.
Fixed or variable locking cam positions.
Selectable rotation angles 90° up to 360°.
-40°C bis +80°C environmental temperature.
Protection class IP 68.
Contact surge protection 8 kV.
Housing surge protection 15 kV.
AES 128 encryption.
Double verification code



Solutions ready to use

Padlocks in various sizes.

Padlocks with various shackle heights.

Cable locks.

Broad range of handle solutions for switching cabinets.

.



Connecting automatic doors, gates or barriers

Door manager with display and integrated NFC/BLE reader.

Online- /Offline capability.

Hot point in virtual network.

Screen allows display of audit trail list, validity of locking authorisations,...

Plastic or stainless steel housing.

Display resolution: 1024x600.

Power supply 12 VDC.

Com-Interfaces: WLAN, LAN (TCP/IP, RJ 45).

Connection of additional card readers: RS 485.



Keys with online capabilities

NFC- or BLE –Interface.

Acoustic and optical feedback.

BLE version optionally programmable via Smartphone.

Programmable via NFC-or Bluetooth interface.

Versions with battery or rechargeable battery.

Battery up to 50.000 operations

Rechargeable battery up to 3.000 operations

Data retention with empty batteries >10 years.

Memory for up to 3.000 locks or lock groups.

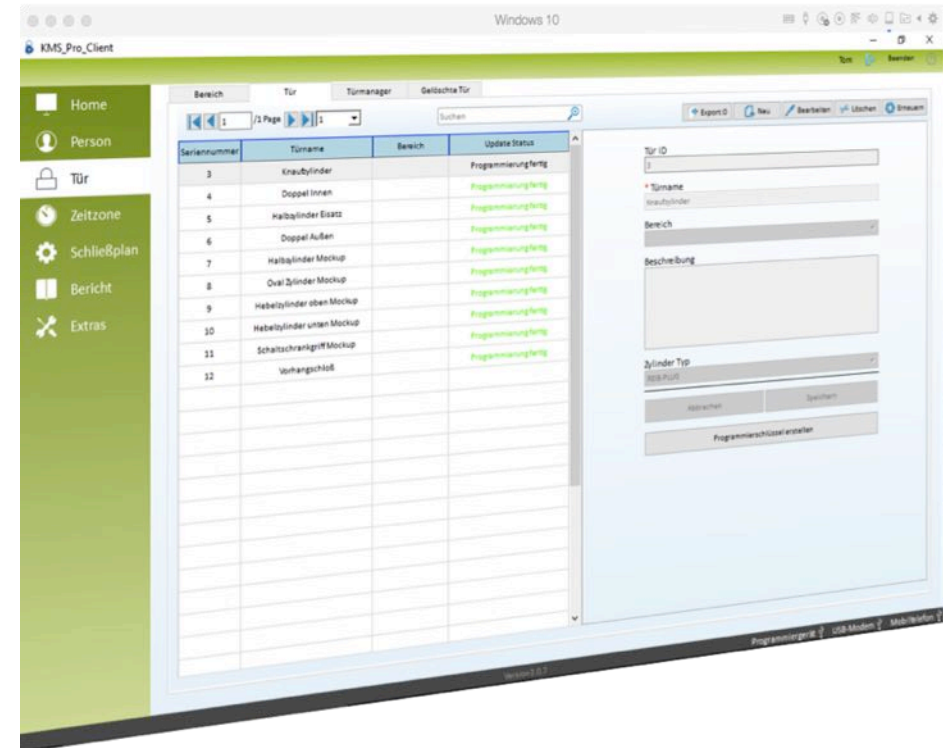
Stores up to 3.000 operations with date and time.

Temperature range -20°C to +60°C



Versatile Software

Optionally as cloud cloud solution or local.
 GUI optionally web-based or local.
 For Windows, IOS, Or Android.
 Administrator independent from operators.
 Standard MySQL database.



System features

KMS Pro

3.00. up to 60.000 locks, 3.000 up to 60.000 keys
Multiuser-capability

KMS Enterprise

3.00. up to 60.000 locks, 3.000 up to 60.000 keys.
Multiuser-capability.
Cloud server.
Web-client.



Certificates

ISO 9001:2015

ISO 14000

ISO 14001

ROHS

OHSAS 18001



The next step in locking technology

We are looking forward to a mutually successful future

The logo for evoXs, with "evo" in a grey sans-serif font, "X" in a large, bold, dark blue sans-serif font, and "s" in a grey sans-serif font.

heavy duty electronic locks